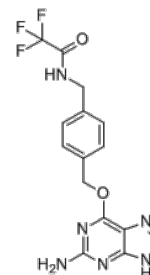


Product Name : Pin1 inhibitor API-1
Cat. No. : PC-35874
CAS No. : 680622-70-2
Molecular Formula : C₁₅H₁₃F₃N₆O₂
Molecular Weight : 366.304
Target : Other Targets
Solubility : 10 mM in DMSO



Biological Activity

Pin1 inhibitor API-1 (API-1) is a potent, specific inhibitor of peptidyl-prolyl cis-trans isomerase NIMA-interacting 1 (**Pin1**) and inhibits Pin1 cis-trans isomerizing activity with IC₅₀ of 72.3 nM.

API-1 displays remarkable selectivity over other peptidyl-prolyl cis-trans isomerases, including Pin4, FKBP12, and cyclophilin A.

API-1 suppresses in vitro cell proliferation and migration of HCC cells with low IC₅₀ values, which is depended on both Pin1 expression and XPO5 phosphorylation.

API-1 recognizes and isomerizes the phosphorylated serine-proline motif of phosphorylated XPO5 and passivates phosphorylated XPO5, maintains the active pXPO5 conformation, rescues the pre-miRNA loading of pXPO5 and increases mature miRNA biogenesis; suppresses tumour growth in mice.

References

Pu W, et al. *Hepatology*. 2018 Aug;68(2):547-560.

Pauly GT, et al. *J Med Chem*. 2008 Nov 27;51(22):7144-53.

Caution: Product has not been fully validated for medical applications. Lab Use Only!

E-mail: tech@probechem.com